

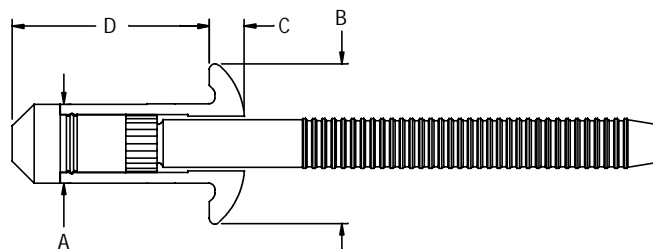
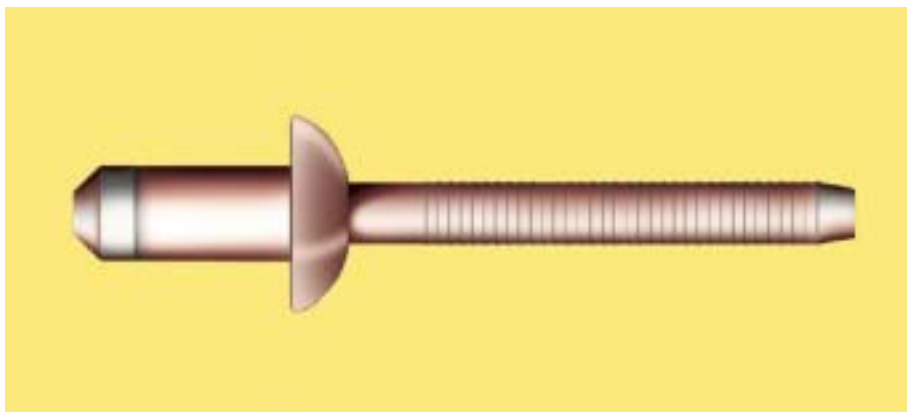
Previous
Screen

Tooling
Options

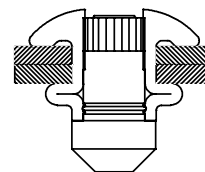
Table of
Contents

Auto-Bulb™

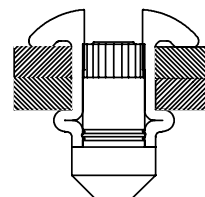
The Auto-Bulb® fastener provides a large diameter head and broad bulb spread that diffuses the load over a larger area, ensuring permanent clamp. This unique fastener also offers a tapered hole-seeking tip, which provides for quick and easy installation.



Min. Grip



Max. Grip



Specifications

Dia. (No.)	Part No.	Grip Range	D max
3/16 (6)	ABP-R6-M2	.075 - .110	.471
Hole Size=.191-.201	ABP-R6-M3	.087 - .150	.510
A nom=.190	ABP-R6-M4	.126 - .189	.550
B max=.375	ABP-R6-M5	.165 - .228	.589
C max=.101	ABP-R6-M6	.205 - .268	.629
	ABP-R6-M7	.244 - .307	.668
	ABP-R6-M8	.283 - .347	.708
	ABP-R6-M9	.323 - .386	.747
	ABP-R6-M10	.362 - .425	.787
	ABP-R6-M11	.402 - .465	.826
	ABP-R6-M12	.441 - .502	.866
	ABP-R6-M13	.481 - .544	.905
	ABP-R6-M14	.520 - .583	.945
	ABP-R6-M15	.560 - .623	.984
	ABP-R6-M16	.599 - .662	1.024
	ABP-R6-M17	.639 - .702	1.063
	ABP-R6-M18	.678 - .741	1.103

Specifications

Dia. (No.)	Part No.	Grip Range	D max
1/4 (8)	ABP-R8-M2	.060 - .138	.622
Hole Size=.261-.272	ABP-R8-M3	.110 - .189	.673
A nom=.260	ABP-R8-M4	.150 - .229	.713
B max=.512	ABP-R8-M5	.189 - .268	.752
C max=.112	ABP-R8-M6	.229 - .308	.792
	ABP-R8-M7	.268 - .346	.831
	ABP-R8-M8	.308 - .387	.871
	ABP-R8-M9	.346 - .425	.910
	ABP-R8-M10	.387 - .466	.950
	ABP-R8-M19	.741 - .820	1.305

Auto-Bulb™



Previous
Screen

Tooling
Options

Table of
Contents

Auto-Bulb™

Typical Installed Values in Nominal Grip (lbs.)

Dia.	Shear	Tensile	Pin Retention
3/16	1200	850	150
1/4	2600	1600	300

Material and Finish

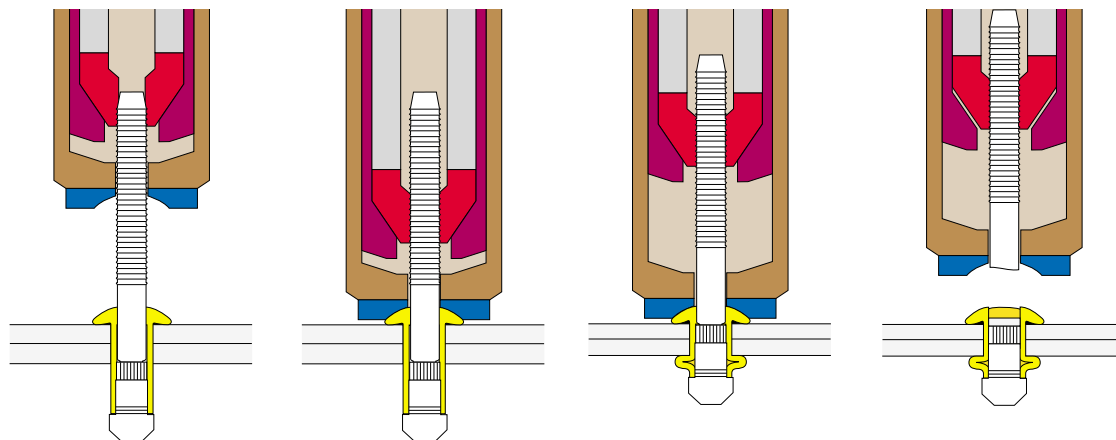
	Material	Finish
Sleeve	Steel	Zinc Plated Gold Chromate
Pin	Steel	Zinc Plated Gold Dichromate

Installation Tooling

Dia.	Installation Tool	Nose Assembly	Type
3/16	2015	125154 (Insert, included with tool)	Pneudraulic
	202	99-3303	Pneudraulic
	2025	99-3303	Pneudraulic
1/4	202	99-3305	Pneudraulic
	2025	99-3305	Pneudraulic

Extended Library of Nose Assemblies
for Auto-Bulb Blind Rivets

Installation Sequence



[Click Here to view animation of installation sequence](#)

Part Number Identification

AB P - R 8 - M 5

