

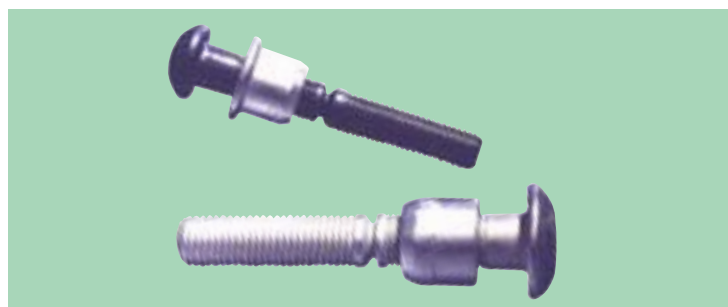
Previous  
Screen

Tooling  
Options

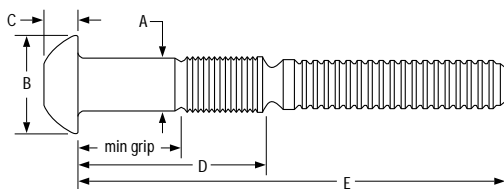
Table of  
Contents

## C50L®

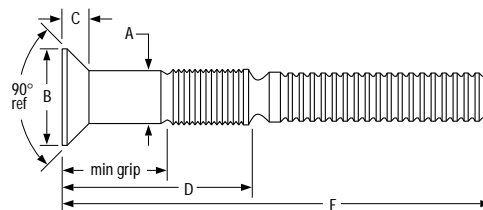
The rugged C50L® PowerBolt™ fastener is an alternative to Grade 5 bolts. Available in diameters ranging from 1/2" to 1-3/8", a variety of materials and head styles, the C50L® is ideal for applications where consistent, uniform clamp force is required.



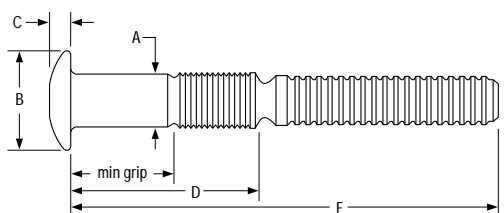
### Round Head - C50LR



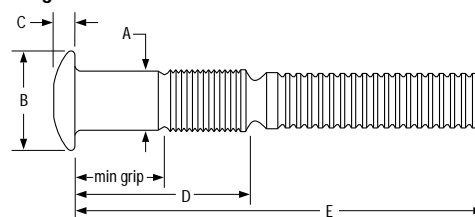
### 90° Flush Head - C50L90



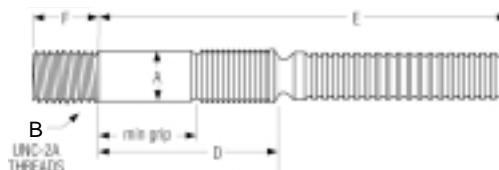
### Truss Head - C50LT



### Large Truss Head - C50L30



### Thread Head - C50LH



## Fastener Dimensions

Dia.	Round Head			Truss Head C50LT		Truss Head C50L30		90° Flush Head		Thread Head C50LH	
	A	B	C	B	C	B	C	B	C	B	C
1/2 (16)	.515 - .493	59/64	5/16	59/64	15/64	1 3/32	17/64	29/32	1/4		
5/8 (20)	.642 - .617	1 9/64	25/64	1 9/64	19/64	1 3/8	21/64	1 5/32	5/16		
3/4 (24)	.768 - .741	1 3/8	15/32	1 3/8	23/64			1 3/8	3/8		
7/8 (28)	.895 - .866	1 19/32	35/64	1 19/32	13/32			1 19/32	7/16		
1 (32)	1.022 - .990	1 53/64	39/64	1 53/64	15/32			1 27/32	1/2		
1 1/8 (36)	1.149 - 1.098	2 1/16	11/16								
1 3/8	1.400-1.350							2-17/32	-	*	27/32

## Installed Fastener Values<sup>1</sup>

Dia.	Carbon Steel Pins LC-2R or 3LC-2R Collars			2024 Aluminum Pins LC-F or 3LC-F Collars			6061 Aluminum Pins LC-1 or 3LC-1 Collars			CRES Pins LC-2CU or 3LC-2CU Collars		
	Shear	Clamp	Tensile	Shear	Clamp	Tensile	Shear	Clamp	Tensile	Shear	Clamp	Tensile
1/2	14400	12050	17050	7300	5900	7850	5300	4400	4900	13900	12050	17050
5/8	22500	19200	27100	11400	9200	12300	8300	6900	7670	21000	19200	27100
3/4	32400	28400	40100	16400	13300	17700	11900	9950	11040	30300	28400	40100
7/8	43400	39250	55450									
1	56500	51500	72700									
1 1/8	69500	58450	82950									
1 3/8	100,000	85,000	129,500									

<sup>1</sup> Minimum values, in pounds, of installed fasteners. Round head, in carbon steel equivalent to ASTM A325 high strength bolts.



Previous  
Screen

Tooling  
Options

Table of  
Contents

C50L®

## Grip Data and Dimensions

Grip is the actual thickness of material to be fastened. Grip includes 'C' dimension on 90° flush head and 60° watertight fasteners. Grips listed are not necessarily available in every head style. Contact HUCK for grips not shown.

Tolerances: Dimension D ± 1/32, Dimension E + 3/16, -1/16

Grip No.	Grip Range min - max	1/2" Diameter (-16)		5/8" Diameter (-20)		3/4" Diameter (-24)		7/8" Diameter (-28)		1" Diameter (-32)		1 1/8" Diameter (-36)	
		D	E	D	E	D	E	D	E	D	E	D	E
4	1/4 - 1/2	1.213	3 11/64	1.433	3 21/32	1.518	4 5/32						
8	1-2 - 3/4	1.463	3 27/64	1.683	3 29/32	1.768	4 13/32	1.921	4 11/16	2.073	5 3/8		
12	3/4 - 1	1.713	3 43/64	1.933	4 5/32	2.018	4 21/32	2.171	4 15/16	2.323	5 5/8		
16	1 - 1 1/4	1.963	3 59/64	2.183	4 13/32	2.268	4 29/32	2.421	5 3/16	2.573	5 7/8		
20	1 1/4 - 1 1/2	2.213	4 11/64	2.433	4 21/32	2.518	5 5/32	2.671	5 7/16	2.823	6 1/8		
24	1 1/2 - 1 3/4	2.463	4 27/64	2.683	4 29/32	2.768	5 13/32	2.921	5 11/16	3.073	6 3/8		
28	1 3/4 - 2	2.713	4 43/64	2.933	5 5/32	3.018	5 21/32	3.171	5 15/16	3.323	6 5/8		
32	2 - 2 1/4	2.963	4 59/64	3.183	5 13/32	3.268	5 29/32	3.421	6 3/16	3.573	6 7/8		
36	2 1/4 - 2 1/2	3.213	5 11/64	3.433	5 21/32	3.518	6 5/32	3.671	6 7/16	3.823	7 1/8		
40	2 1/2 - 2 3/4	3.463	5 27/64	3.683	5 29/32	3.768	6 13/32	3.921	6 11/16	4.073	7 3/8		
44	2 3/4 - 3	3.713	5 43/64	3.933	6 5/32	4.018	6 21/32	4.171	6 15/16	4.323	7 5/8		
48	3 - 3 1/4	3.963	5 59/64	4.183	6 13/32	4.268	6 29/32	4.421	7 3/16	4.573	7 7/8		
52	3 1/4 - 3 1/2	4.213	6 11/64	4.433	6 21/32	4.518	7 5/32	4.671	7 7/16	4.823	8 1/8		
56	3 1/2 - 3 3/4	4.463	6 27/64	4.683	6 29/32	4.768	7 13/32	4.921	7 11/16	5.073	8 3/8	5.250	8 9/16
60	3 3/4 - 4	4.713	6 43/64	4.933	7 5/32	5.018	7 21/32	5.171	7 15/16	5.323	8 5/8	5.500	8 13/16
64	4 - 4 1/4	4.963	6 59/64	5.183	7 13/32	5.268	7 29/32	5.421	8 3/16	5.573	8 7/8	5.750	9 1/16
68	4 1/4 - 4 1/2	5.213	7 11/64	5.433	7 21/32	5.518	8 5/32	5.671	8 7/16	5.823	9 1/8	6.000	9 5/16
72	4 1/2 - 4 3/4	5.463	7 27/64	5.683	7 29/32	5.768	8 13/32	5.921	8 11/16	6.073	9 3/8	6.250	9 9/16
76	4 3/4 - 5	5.713	7 43/64	5.933	8 5/32	6.018	8 21/32			6.323	9 5/8	6.500	9 13/16
80	5 - 5 1/4	5.963	7 59/64							6.573	9 7/8	6.750	10 1/16
84	5 1/4 - 5 1/2									6.823	10 1/8	7.000	10 5/16
88	5 1/2 - 5 3/4									7.073	10 3/8	7.250	10 9/16
92	5 3/4 - 6									7.323	10 5/8	7.500	10 13/16

### Grip Data And Dimensions (Inches)

Grip is the actual thickness of material to be fastened. Tolerances: Dimension D ± 1/32", Dimension E + 3/16", -1/16"

Grip Number	Minimum	Maximum	D	E
6	5-7/8"	6-1/2"	8.186	12-5/8"
7	6-7/8"	7-1/2"	9.186	13-5/8"
8	7-7/8"	8-1/2"	10.186	14-5/8"
9	8-7/8"	9-1/2"	11.186	15-5/8"
10	9-7/8"	10-1/2"	12.186	16-5/8"
11	10-7/8"	11-1/2"	13.186	17-5/8"
12	11-7/8"	12-1/2"	14.186	18-5/8"
13	12-7/8"	13-1/2"	15.186	19-5/8"
14	13-7/8"	14-1/2"	16.186	20-5/8"
15	14-7/8"	15-1/2"	17.186	21-5/8"
16	15-7/8"	16-1/2"	18.186	22-5/8"
17	16-7/8"	17-1/2"	19.186	23-5/8"
18	17-7/8"	18-1/2"	20.186	24-5/8"
19	18-7/8"	19-1/2"	21.186	25-5/8"
20	19-7/8"	20-1/2"	22.186	26-5/8"
21	20-7/8"	21-1/2"	23.186	27-5/8"
22	21-7/8"	22-1/2"	24.186	28-5/8"

\* For dimensions on 7/8" through 1-1/8" diameter fasteners, see HWB802S

