

Previous
Screen

Tooling
Options

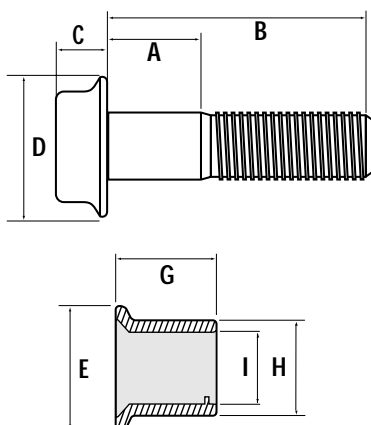
Table of
Contents

Huck-Spin®

This Grade 8 fastening system employs the world's most advanced lockbolt technology to produce a fail-proof joint. Huck-Spin® fastening systems are designed for consistent, reliable installation without the noise and waste associated with pintails. In addition to the round head design, a hex head style is also available which allows the Huck-Spin® to be removed with a standard impact wrench.



Round Head Inches



Fastener Dimensions

1/2" Round Head (DT16)

	Grip No.	A	B
C=.397	4	.250	1.715
D=1.07	6	.250	1.840
E=.75	8	.250	1.965
G=.750	10	.375	2.090
H=.812	12	.500	2.215
I=.519	16	.750	2.465
	20	1.000	2.715
	24	1.250	2.965
	28	1.500	3.215
	32	1.750	3.465
	36	2.000	3.715
	40	2.250	3.965
	44	2.500	4.215
	48	2.750	4.465
	52	3.000	4.715

5/8" Round Head (DT20)

	Grip No.	A	B
C=.498	4	.250	2.005
D=1.33	6	.250	2.130
E=.94	8	.250	2.255
G=.972	10	.375	2.380
H=1.009	12	.500	2.505
I=.645	14	.625	2.630
	16	.750	2.755
	18	.875	2.880
	20	1.000	3.005
	22	1.125	3.130
	24	1.250	3.255
	26	1.375	3.380
	28	1.500	3.505
	32	1.750	3.755
	36	2.000	4.005
	40	2.250	4.255
	44	2.500	4.505
	48	2.750	4.755
	52	3.000	5.000

3/4" Round Head (DT24)

	Grip No.	A	B
C=.60	4	.250	2.290
D=1.59	6	.250	2.415
E=1.12	8	.250	2.540
G=1.107	12	.500	2.790
H=1.213	16	.750	3.040
I=.780	20	1.000	3.290
	24	1.250	3.540
	28	1.500	3.790
	32	1.750	4.040
	36	2.000	4.290
	40	2.250	4.540
	44	2.500	4.790
	48	2.750	5.040
	52	3.000	5.290

Grip Data

Grip Number	Range (mm) min-max	Grip Number	Range (mm) min-max
4	.125 - .500	24	1.250 - 1.750
6	.125 - .625	26	1.375 - 1.875
8	.250 - .750	28	1.500 - 2.000
10	.375 - .875	32	1.750 - 2.250
12	.500 - 1.00	36	2.000 - 2.500
14	.625 - 1.125	40	2.250 - 2.750
16	.750 - 1.25	44	2.500 - 3.000
18	.875 - 1.375	48	2.750 - 3.250
20	1.000 - 1.500	52	3.000 - 3.500
22	1.125 - 1.625	60	3.500 - 4.000

Huck-Spin®



Previous Screen

Tooling Options

Table of Contents

Huck-Spin®

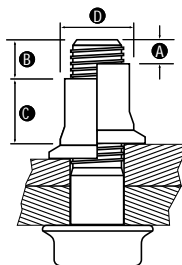
Installation Tooling

Dia.	Installation Tool	Nose Assembly	Type
1/2	HS52	99-7313-1	Hydraulic
5/8	HS52	99-7315-1	Hydraulic
3/4	HS52	99-7314-1	Hydraulic

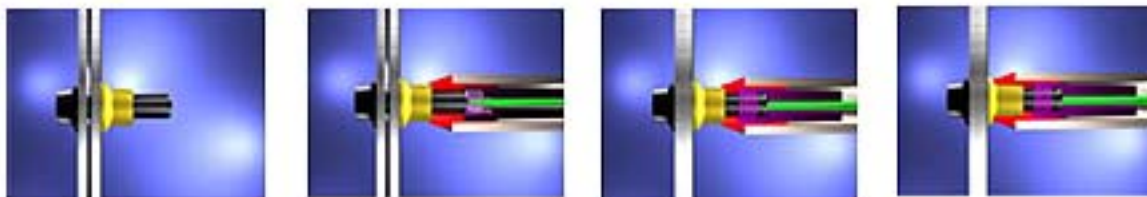
Extended Library of Nose Assemblies for Huck-Spin LockBolts

Inspection Data

ROUND HEAD INCH SERIES (")				
DIAMETER	A (Max)	B (Max)	C (Min)	D (Max)
DT16	.43	.93	.56	.76
DT20	.54	1.04	.73	.945
DT24	.64	1.14	.86	1.132

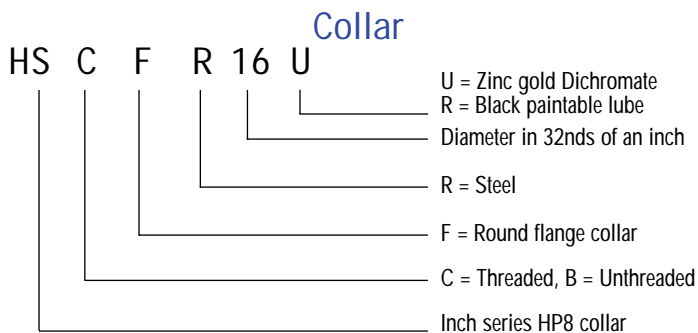
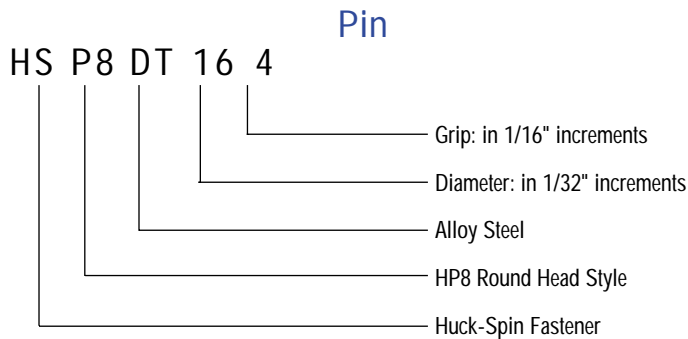


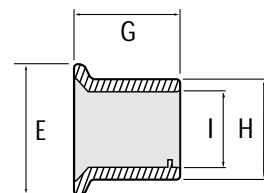
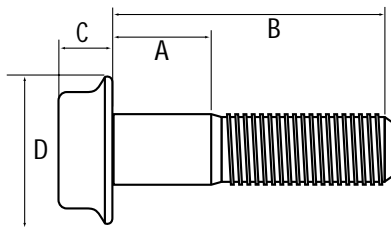
Installation Sequence



[Click Here to view animation of installation sequence](#)

Part Number Identification





Round Head Metric

Fastener Dimensions

14mm Round Head (DT14)

	Grip No.	A	B
C= 11.50	-10	4.0	54.42
D= 30.00	-15	9.0	59.42
E= 31.00	-20	14.0	64.42
G= 21.80	-25	19.0	69.42
H= 23.30	-30	24.0	74.42
I= 14.60	-35	29.0	79.42
	-40	34.0	84.42
	-45	39.0	89.42
	-50	44.0	94.42
	-55	49.0	99.42
	-60	54.0	104.42
	-65	59.0	109.42
	-70	64.0	114.42
	-75	69.0	119.42

Fastener Dimensions

16mm Round Head (DT16)

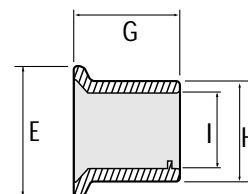
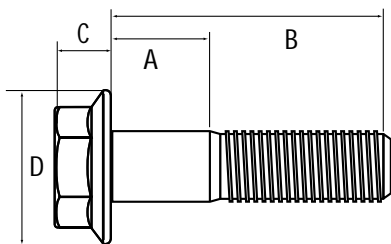
	Grip No.	A	B
C= 12.80	10	4.0	54.41
D= 24.10	15	9.0	59.41
E= 34.80	20	14.0	64.41
G= 23.40	25	19.0	69.41
H= 25.60	30	24.0	74.41
I= 16.46	35	29.0	79.41
	40	34.0	84.41
	45	39.0	89.41
	50	44.0	94.41
	55	49.0	99.41
	60	54.0	104.41
	65	59.0	109.41
	70	64.0	114.41

Fastener Dimensions

20mm Round Head (DT20)

	Grip No.	A	B
C=16.10	-15	9.0	68.24
D= 30.10	-20	14.0	73.24
E= 43.05	-25	19.0	78.24
G= 28.80	-30	24.0	83.24
H= 32.10	-35	29.0	88.24
I= 20.45	-40	34.0	93.24
	-45	39.0	98.24
	-50	44.0	103.24
	-55	49.0	108.24
	-60	54.0	113.24
	-80	74.0	133.25

Hex Head Metric



16mm Hex Head (DT16)

	Grip No.	A	B
C=15.10	10	4.0	59.54
D=32.80	15	9.0	64.54
E=21.00	17	10	67.54
G=28.98	20	14.0	69.54
H=26.00	25	19.0	74.54
I=16.10	30	24.0	79.54
	35	29.0	84.54
	40	34.0	89.54
	45	39.0	94.54
	50	44.0	99.54
	55	49.0	104.54
	60	54.0	109.54
	65	59.0	114.54
	70	64.0	119.54

20mm Hex Head (DT20)

	Grip No.	A	B
C=17.70	15	9.0	73.68
D=46.00	20	14.0	78.68
E=30.00	25	19.0	83.68
G=33.92	30	24.0	88.68
H=32.00	35	29.0	93.68
I=20.34	40	34.0	98.68
	45	39.0	103.68
	50	44.0	108.68
	55	49.0	113.68
	60	54.0	118.68

Previous Screen

Tooling Options

Table of Contents

Metric Huck-Spin®



Previous
Screen

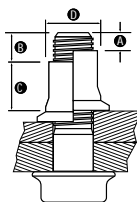
Tooling
Options

Table of
Contents

Metric Huck-Spin®

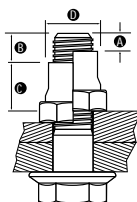
Inspection Data-ROUND HEAD METRIC (MM)

NOMINAL DIA.	A (Max)	B (Max)	C (Min)	D (Max)
DT16	13.76	25.76	17.7	24.1



Inspection Data-HEX HEAD METRIC (MM)

NOMINAL DIA.	A (Max)	B (Max)	C (Min)	D (Max)
DT16	17.2	25.76	17.7	24.1
DT20	17.2	29.2	21.2	30.3



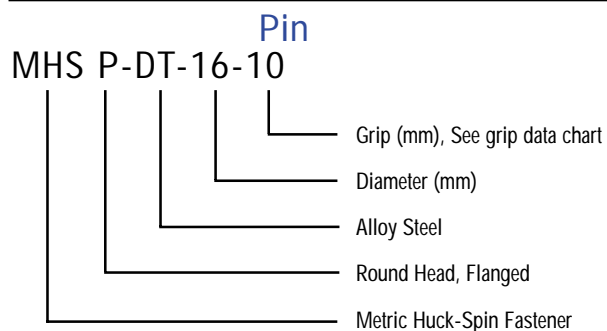
Grip Data

Grip Number	Range (mm) min-max	Grip Number	Range (mm) min-max
10	4 - 6	40	34 - 46
15	9 - 21	45	39 - 51
17	10 - 24	50	44 - 56
20	14 - 26	55	49 - 61
25	19 - 31	60	54 - 66
30	24 - 36	65	59 - 71
35	29 - 41	70	64 - 76

Installation Tooling

Dia.	Installation Tool	Nose Assembly	Type
12mm	HS37	99-7412-1	Hydraulic
14mm	HS52	99-7415-1	Hydraulic
16mm	HS52	99-7315-1	Hydraulic
20mm	HS52	99-7418-1	Hydraulic

Part Number Identification



Part Number Identification

